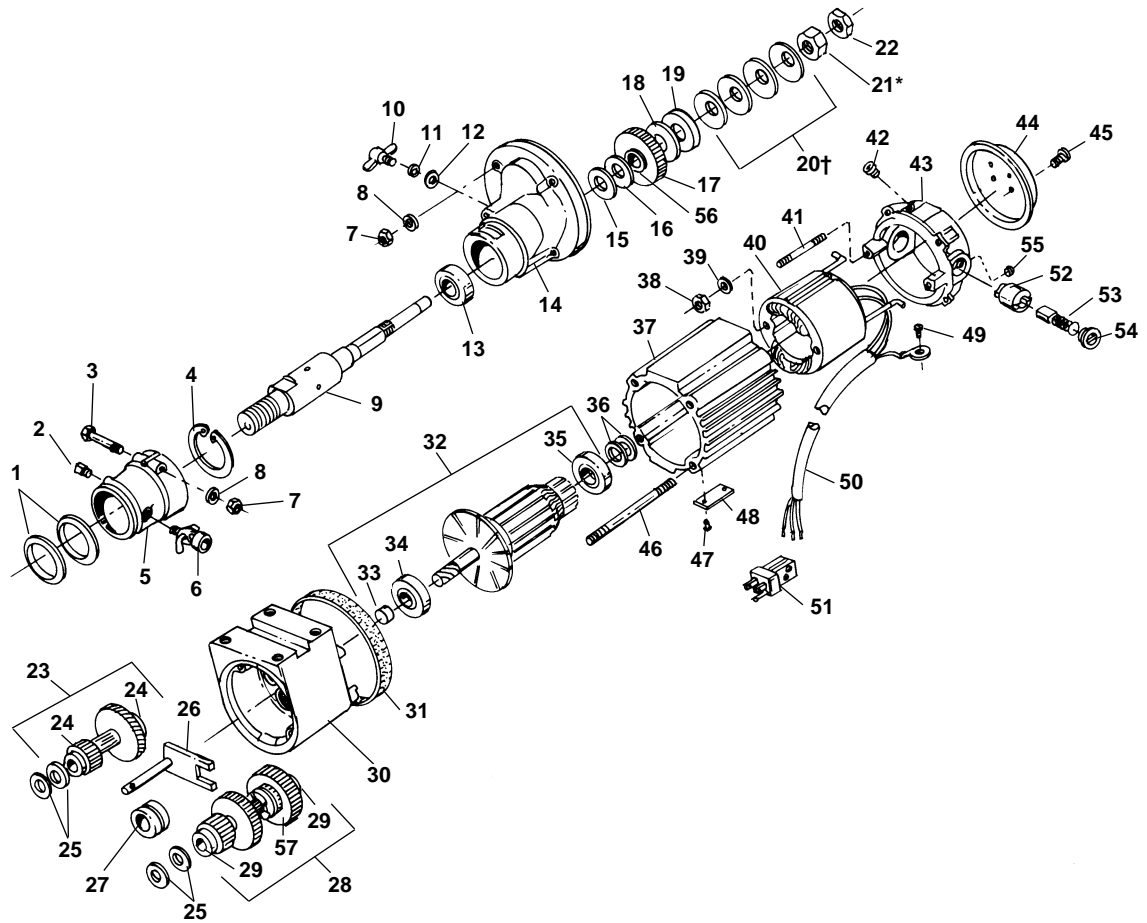


**Motor Type 1**



**NOTE: Order parts by Catalog Number only.  
DO NOT order by Reference Number.**

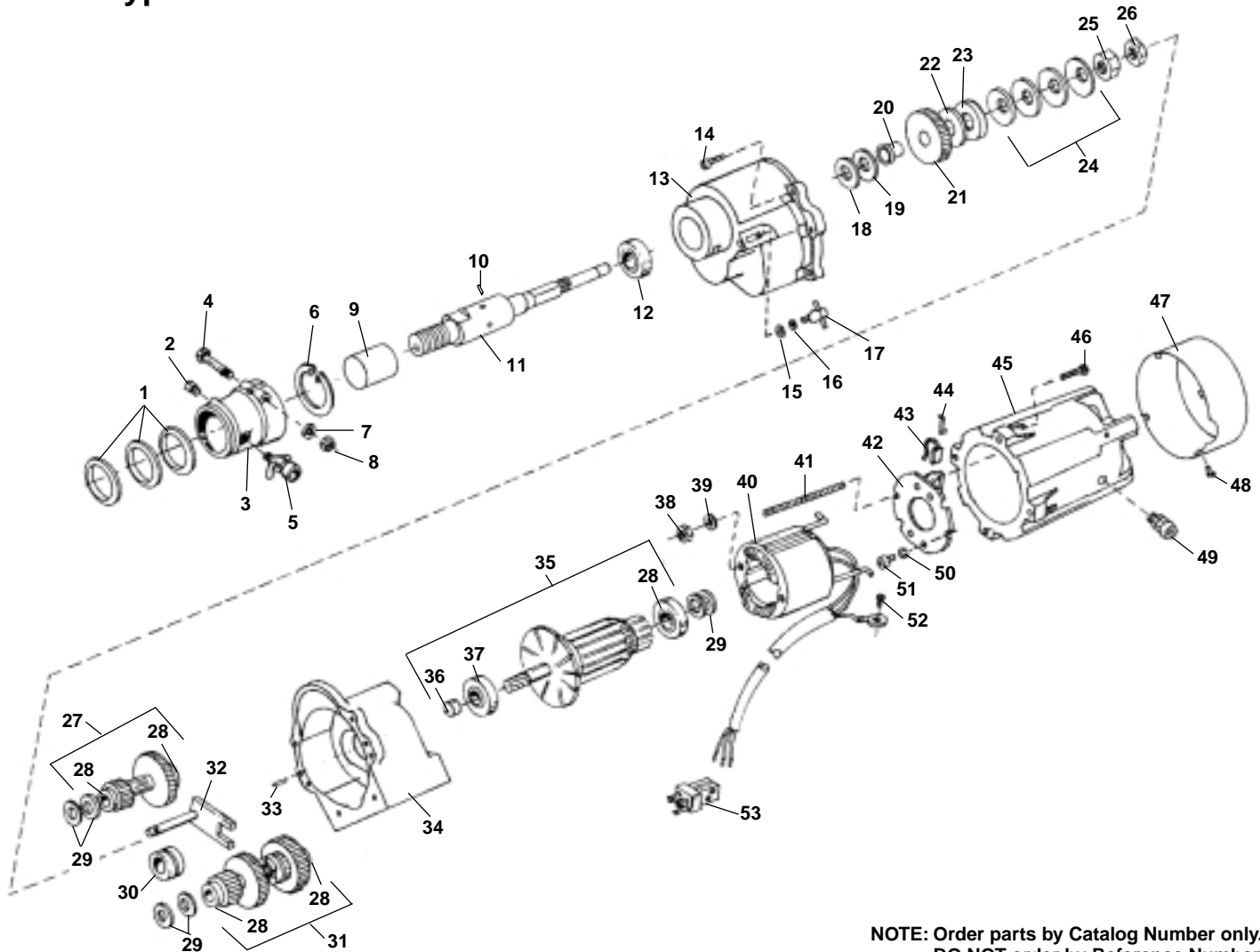
Ref. No.	Catalog No.	Description	Ref. No.	Catalog No.	Description	Ref. No.	Catalog No.	Description
1	99215	Set of 2 Seals	22	99350	Lock Nut	41	99405	End Bell Stud (2)
2	—	1/4" Pipe Plug	23	99260	Gear Shaft Assembly	42	99305	Strain Relief
3	59915	Screw 1/4" - 28 x 2 1/4"	24	45060	Ball Bearing (2)	43	99200	Commutator End Bell (Includes Refs. 41, 52, 54)
4	99345	Snap Ring	25	99275	Conical Spring Washer [4]	44	99410	Commutator End Cover
5	99210	Waterjacket	26	99225	Shift Arm Assembly	45	99415	End Cover Screw (4)
6	99395	Water Petcock w/Hose Fitting	27	99285	Needle Bearing	46	99400	Field Housing Stud (4)
7	60410	Hex Nut 1/4 - 28 (5)	28	99230	Gear Shaft Assembly	47	46870	Drive Screw [5]
8	44740	Pkg. of 5 Washers	29	45060	Ball Bearing (2)	48	—	Name Plate
9	99340	Output Shaft	30	99250	Gear Housing	49	34715	Screw #10 - 32 x 3/8" [5]
10	99220	Shift Knob	31	99300	Fan Guard	50	99315	Line Cord Only
11	99265	Conical Spring Washer	32	99235	Armature Assembly (115V)	51	99320	Plug (115V)
12	99280	Washer	33	17402	Armature Assembly (230V)	51	17412	Plug (230V)
13	45315	Bearing	34	99245	Slinger	52	99205	Brush Holder (2)
14	99335	End Plate	35	99240	Ball Bearing	53	99330	Set of Brushes [2]
15	99355	Clutch Plate	36	99270	Conical Spring Washer [2]	54	99325	Set of Brush Caps [2]
16	99360	Clutch Plate, Bronze	37	99255	Field Housing	55	99295	Screw #10 - 32 x 3/4" (4)
17	99370	Gear	38	79495	Hex Nut #10 - 32 (2)	56	99365	Bushing
18	99375	Clutch Plate, Bronze	39	99290	Lock Washer #10 (2)	57	44632	Large Gear
19	99380	Clutch Plate	40	99310	Field, 115V w/Line Cord			
†20	99385	Conical Spring Washer [4]		17407	Field, 230V w/Line Cord			
*21	99390	Stop Nut (Torque to 55-60 ft./lbs.)						

(3) = Total Quantity Required.

[2] = Quantity supplied per package when specified catalog number is ordered.

†Service Note: Ref. 20. Install with concave side toward gear.

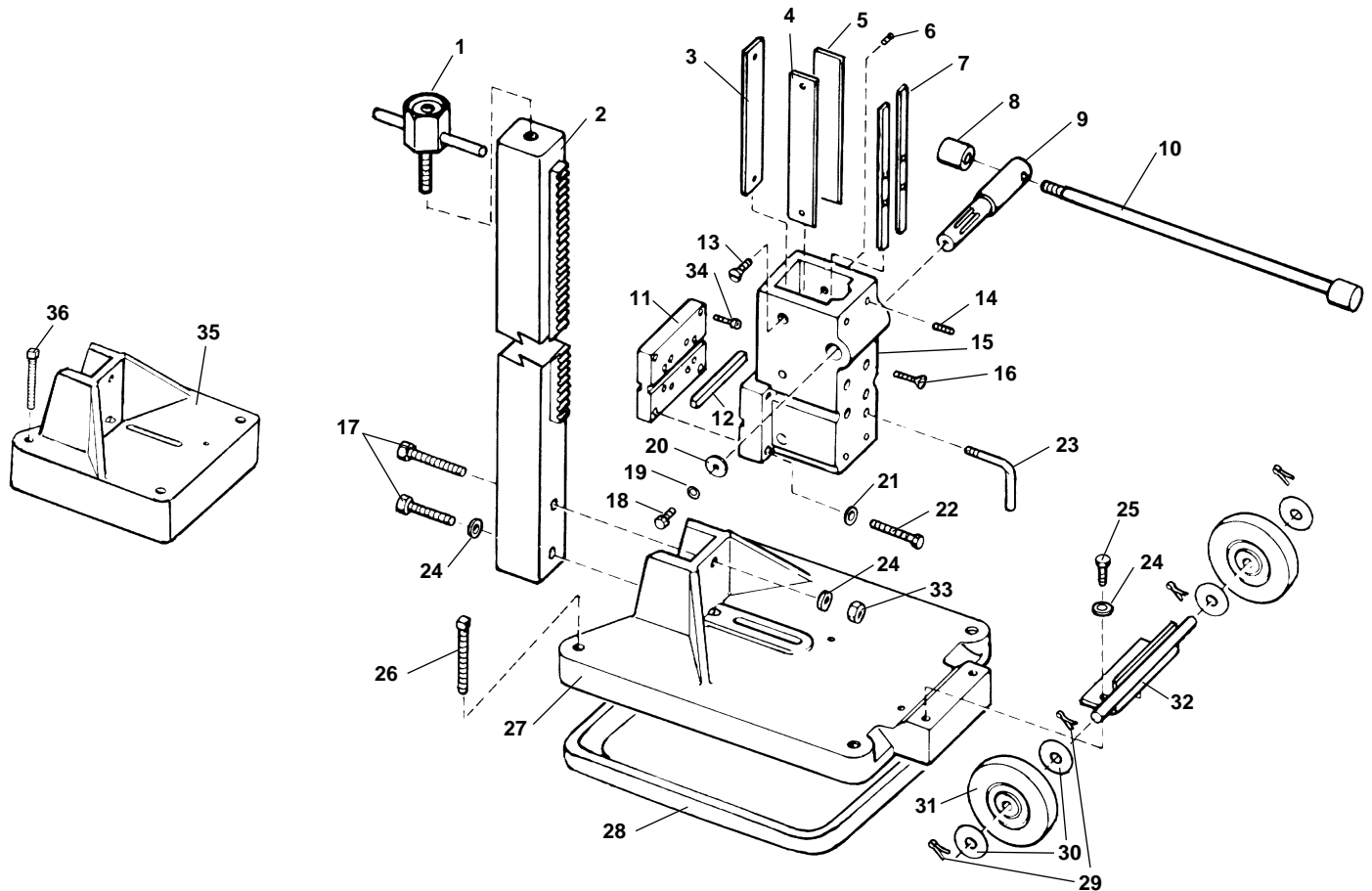
**Motor Type 2**



**NOTE: Order parts by Catalog Number only.  
DO NOT order by Reference Number.**

Ref. No.	Catalog No.	Description	Ref. No.	Catalog No.	Description
—	98125	Motor Complete, 115V	28	63202	Bearing
—	16382	Motor Complete, 230V	29	63207	Belvil Washers (6)
1	63117	Set of Seals	30	99285	Needle Bearing
2	—	1/4" Pipe Plug	31	63217	Gear Assembly 2nd Stage
3	63197	Water Jacket	32	63212	Shifter Arm Assembly
4	59915	Screw 1/4" - 28 x 2 1/4"	33	63227	Dowel Pin (2)
5	99395	Water Petcock w/Hose Fitting	34	63232	Gear Housing
6	64507	Snap Ring	35	63237	Armature Assembly 115V
7	44740	Lock Washer	—	63837	Armature Assembly 230V
8	60410	Hex Nut 1/4" - 28	36	99245	Slinger
9	63122	Wear Sleeve	37	63242	Bearing
10	63192	Spring Pin Set (2)	38	64517	Hex Nut 10-32 (2)
11	63127	Output Shaft	39	58542	Lock Washer (2)
12	63132	Bearing	40	63247	Field Assembly 115V
13	63832	Front Housing	—	63842	Field Assembly 230V
14	64512	Soc. Hd. Cap Screw 1/4" - 28 x 1" (6)	41	63252	Stud
15	99280	Washer	42	63257	Brush Card Assembly
16	99265	Conical Washer	43	63262	Brush Assembly (2)
17	99220	Shift Knob	44	63267	Brush Springs [2]
18	63137	Clutch Washer	45	63272	Field Housing
19	63142	Clutch Plate	46	64522	Soc. Cap. Screw 1/4"-28 x 1 1/4" (4)
20	63147	Bushing	47	63277	Housing Cover
21	63152	Output Gear	48	64527	Cap Screw #10-32 x 3/4" (4)
22	63162	Clutch Washer	49	63282	Strain Relief
23	63167	Clutch Plate	50	85945	#8 Ext. Washer
24	63172	Conical Washers (4)	51	64532	Cap Hd. Screw 8-32 x 3/4" (2)
25	63177	Stop Nut (Torque to 55-60 Ft./lbs.)	52	64537	Ft. Hd. Screw 10-32 x 1/4"
26	63182	Lock Nut	53	63157	Plug 115V
27	63187	Gear Assembly 1st Stage	—	63847	Plug 230V

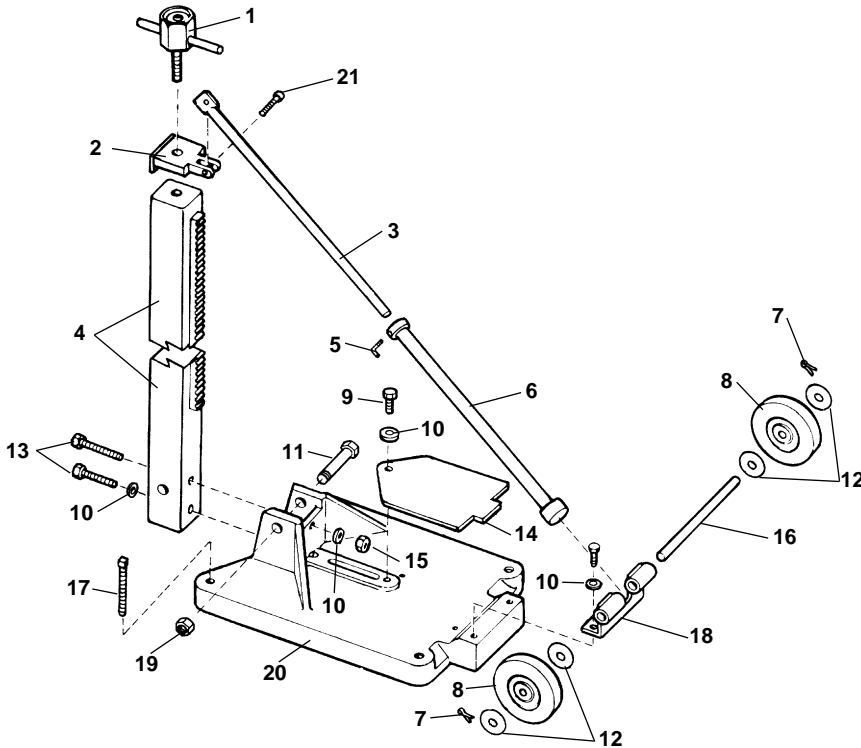
**Anchor/Vacuum Drill Stand**



**NOTE: Order parts by Catalog Number only.  
DO NOT order by Reference Number.**

Ref. No.	Catalog No.	Description	Ref. No.	Catalog No.	Description
1	98805	Ceiling Jack Screw	20	98830	Flat Washer 1/4" x 1 1/4" O.D.
2	98800	Mast w/Gear Rack	21	40930	3/8" Lock Washer (4)
3	98750	Non-Adjustable Shim	22	46670	Hex Cap Screw 3/8" - 16 x 2 (4)
4	98835	Non-Adjustable Shim	23	98775	Locking Handle
5	98770	Adjusting Shim	24	84150	1/2" Lock Washer (4)
6	33720	Cup Set Screw 1/4" - 20 x 3/8" (2)	25	45500	Hex Bolt 1/2" - 13 x 1 1/4" (2)
7	98765	Set of 2 Shims	26	98825	Sq. Head Set Screw 5/8"-11 x 4 (4) (RB-214)
8	98795	Handle Nut (2)	27	98815	Anchor Vacuum Base (RB-214)
9	98785	Pinion Gear	28	98820	Vacuum Seal (RB-214)
10	98790	Feed Handle	29	47030	Cotter Pin 1/8" x 1" (4)
11	98780	Motor Mount Plate	30	41220	Flat Washer 5/8" (4)
12	98760	3/8" Sq. x 4" Key	31	98845	Wheel (2)
13	98740	Brass FH Screw 1/4" - 20 x 5/8" (6)	32	98840	Axle Assembly
14	98755	Cup Set Screw 1/4" - 20 x 1/8" (4)	33	44745	Hex Nut 1/2" x 13 (4)
15	98810	Carriage	34	99515	Socket Head Screw 1/4" - 28 x 1" (4)
16	98745	Brass FH Screw 1/4" - 20 x 1" (4)	35	98850	Anchor Base (RB-215)
17	80265	Hex Cap Screw 1/2" - 13 x 3 1/2" (2)	36	98855	Sq. Head Bolt 1/2" - 13 x 4" (RB-215)
18	60005	Hex Cap Screw 1/4" - 20 x 3/4"	37	98120	2" Spacer Block (Not Shown-Required for bits over 10" diameter)
19	44740	1/4" Lock Washer			

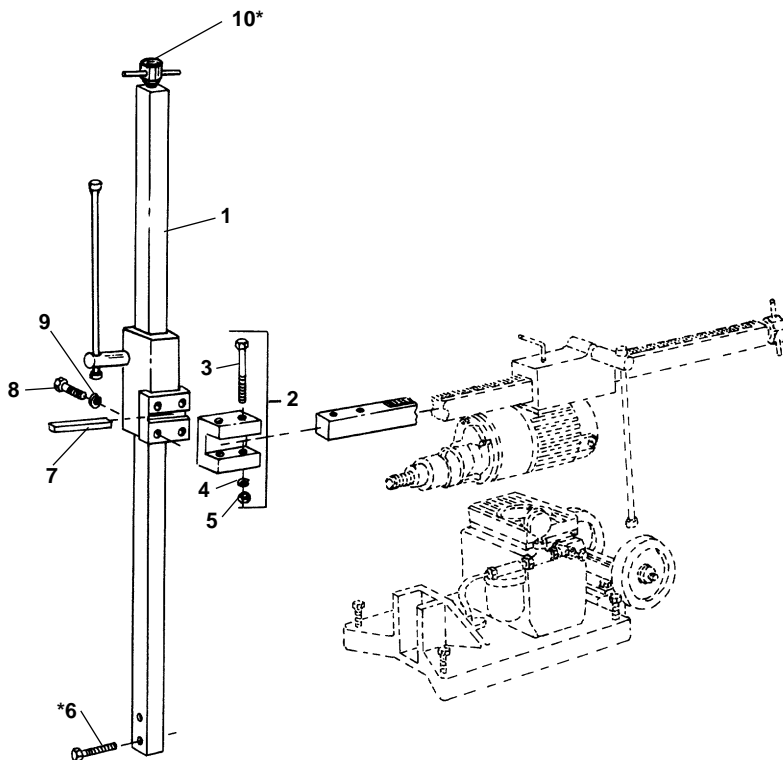
**RB-214A Swivel Base and Mast**



**NOTE: Order parts by Catalog Number only.  
DO NOT order by Reference Number.**

Ref. No.	Catalog No.	Description
1	99805	Ceiling Jack Screw
2	29077	Mast Bracket
3	29082	Upper Brace
4	29087	Angle Mast 2 1/2" x 2 1/2"
5	29092	L-Bolt
6	29097	Lower Brace
7	47030	Cotter Pin, 1/8" x 1" (2)
8	98845	Wheel (2)
9	45500	Hex Bolt, 1/2" - 13 x 1 1/4" (2)
10	84150	Lock Washer 1/2" (4)
11	29102	Hex Head Bolt, 1/8" x 4 1/2"
12	41220	Flat Washer, 3/8" (4)
13	80265	Hex Cap Screw, 1/2" - 13 x 3 1/2" (2)
14	29107	Vacuum Pump Plate
15	44745	Hex Nut, 1/2" x 13
16	29112	Axle
17	98825	Sq. Hd. Set Screw, 5/16" - 11 x 4" (4)
18	29117	Axle Bracket
19	29122	Hex Nut, 1-8
20	29127	Anchor Vacuum Base
21	29132	Socket Cap Screw 5/16" - 18 x 1"
22	98120	2" Spacer Block (Not Shown- Required for bits over 10" diameter)

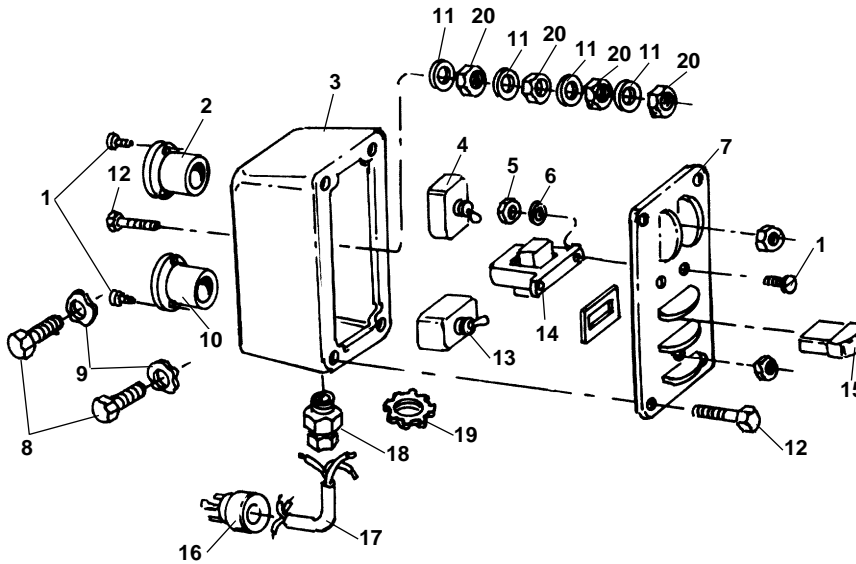
**RB-90 90° Attachment**



Ref. No.	Catalog No.	Description
—	32437	RB-90 90° Attachment
1	32447	82" Mast
2	32452	90° Adapter Assembly
3	16762	1/2" - 13 x 5" Hex Bolt (2)
4	84150	1/2" Lock Washer (2)
5	44745	1/2" - 13 Hex Nut (2)
*6	80265	1/2" - 13 x 3 1/2" Hex Cap Screw (2)
7	98760	3/8" Sq. x 4 Key
8	46670	3/8" - 16 x 2 Hex Cap Screw (4)
9	40930	3/8" Lock Washer (4)
*10	98805	Ceiling Jack Screw

\*Transfer From Original Core Drill  
Refer to Stand Assembly for Carriage Components

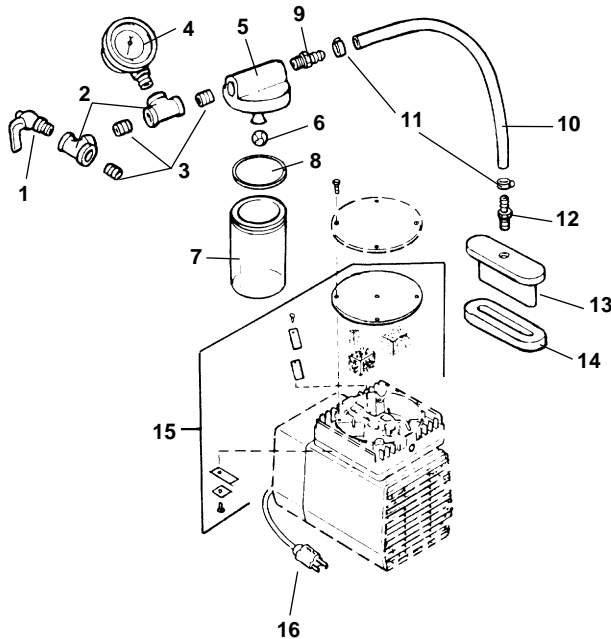
**Control Panel**



**NOTE: Order parts by Catalog Number only.  
DO NOT order by Reference Number.**

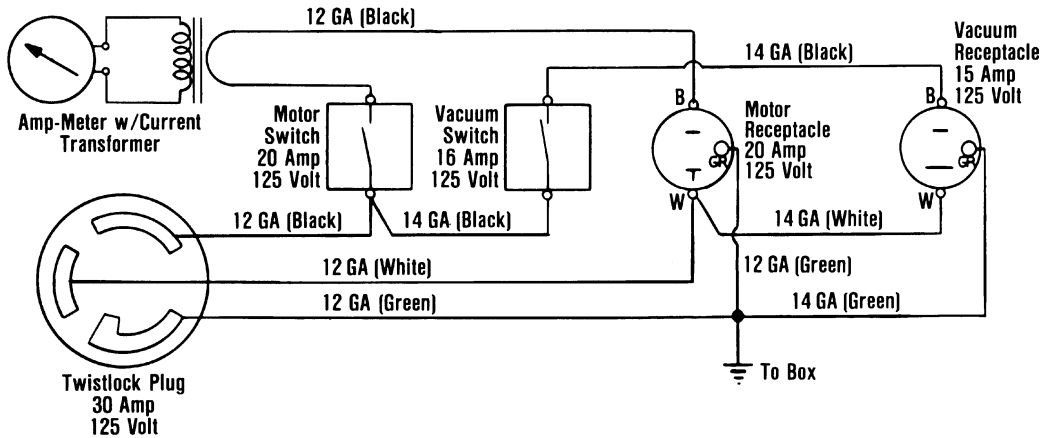
Ref. No.	Catalog No.	Description
1	99430 17417	Screw #6 - 32 x 1/2" (6) (115V) Screw #10 - 24 x 1" (6) (230V)
2	99435 17422	Receptacle, 20 Amp, (115V) Receptacle, 20 Amp, (230V)
3	99440	Control Box
4	99445 17427	Toggle Switch, 16A, (115V) Toggle Switch, 8A, (230V)
5	99450	Hex Nut #6 - 32 (2)
6	99455 45365	Lock Washer #6 (2) (115V) Flat washer #10 (2) (230V)
7	99460 17432	Cover Plate (115V) Cover Plate (230V)
8	99465	Hex Screw 1/4" - 20 x 1 1/4" (2)
9	44740	Lock Washer 1/4" (2)
10	99470 17437	Receptacle, 15 Amp, (115V) Receptacle, 15 Amp, (230V)
11	46985	Lock Washer #10 (5)
12	92455	Screw #10 - 24 x 3/4" (5)
13	99480 17442	Toggle Switch, 20A, (115V) Toggle Switch, (230V)
14	99485	Transformer
15	99490 17447	Ammeter (115V) Ammeter (230V)
16	99495	Plug, 30 Amp
17	99500 17452	Line Cord (115V) Line Cord (230V)
18	99505	Cord Connector
19	99510	Lock Nut
20	44695	Hex Nut #10-24 (5)
21	99170	Suppressor (230V) South Africa

**RB-214 Vacuum Pump**

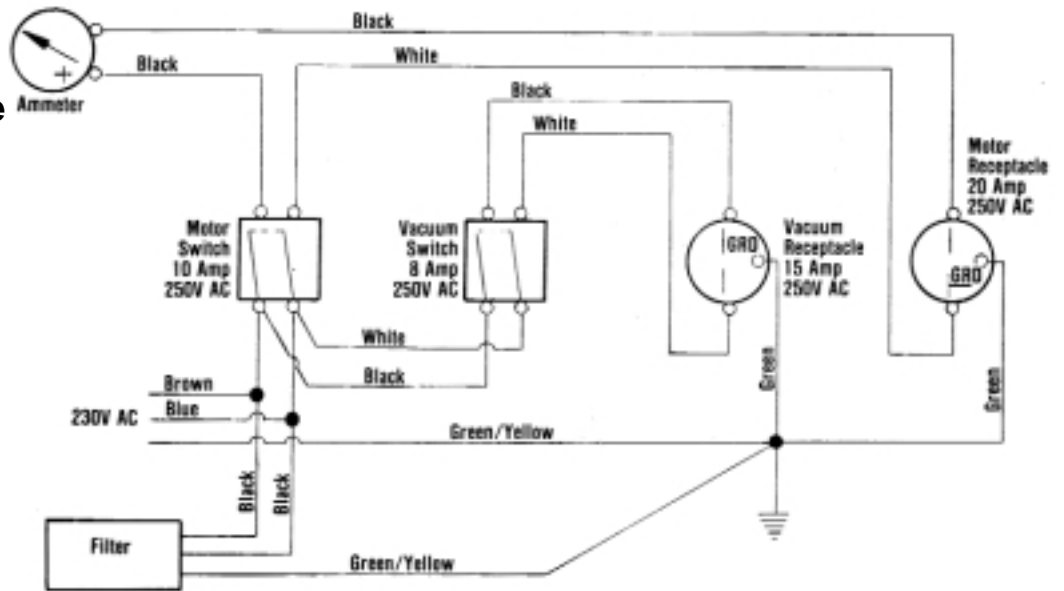


Ref. No.	Catalog No.	Description
—	98110	Pump Complete
1	98865	Air Petcock
2	—	1/4" Pipe Tee (2)
3	—	1/4" Close Nipple (3)
4	98870	Vacuum Gauge
5	98875	Water Trap Top
6	98890	Float Ball
7	98880	Water Trap Jar
8	98885	Water Jar Gasket
9	98910	1/4" Barb to 1/4" Male
10	98895	Hose, 9" x 1/4"
11	35142	1/2" Hose Clamp (2)
12	98915	1/4" Barb to 1/8" Male
13	98900	Slot Cap
14	98905	Slot Cap Gasket
15	98860	Vacuum Pump Service Kit
16	33556	Plug 115V
	33546	Plug 230V

**Wiring Diagram (115V, 60 Hz)**



**Wiring Diagram (230V, 50-60 Hz)  
Australia and Europe**



**Wiring Diagram (230V, 50-60 Hz)  
Cat. No. 16597**

