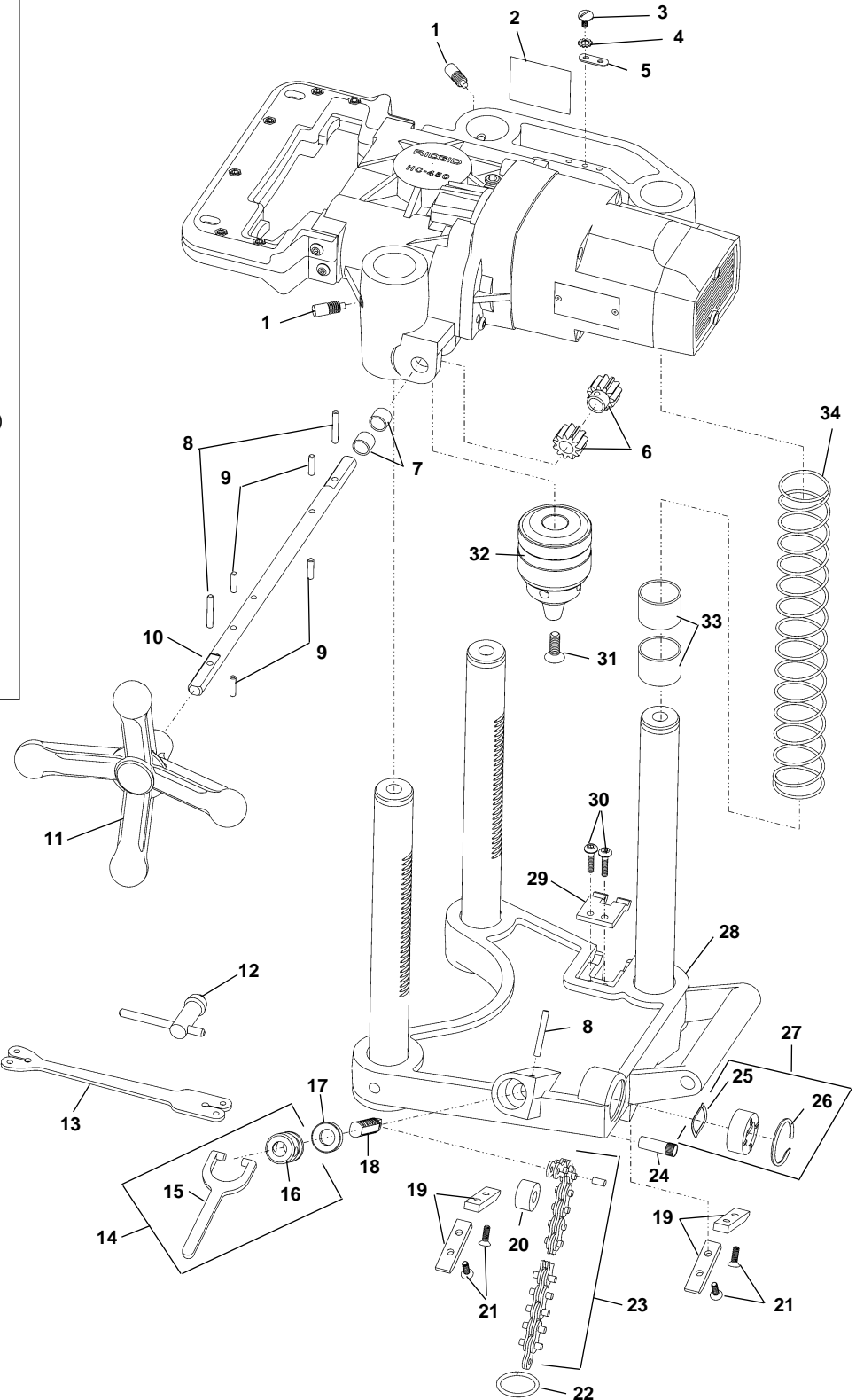


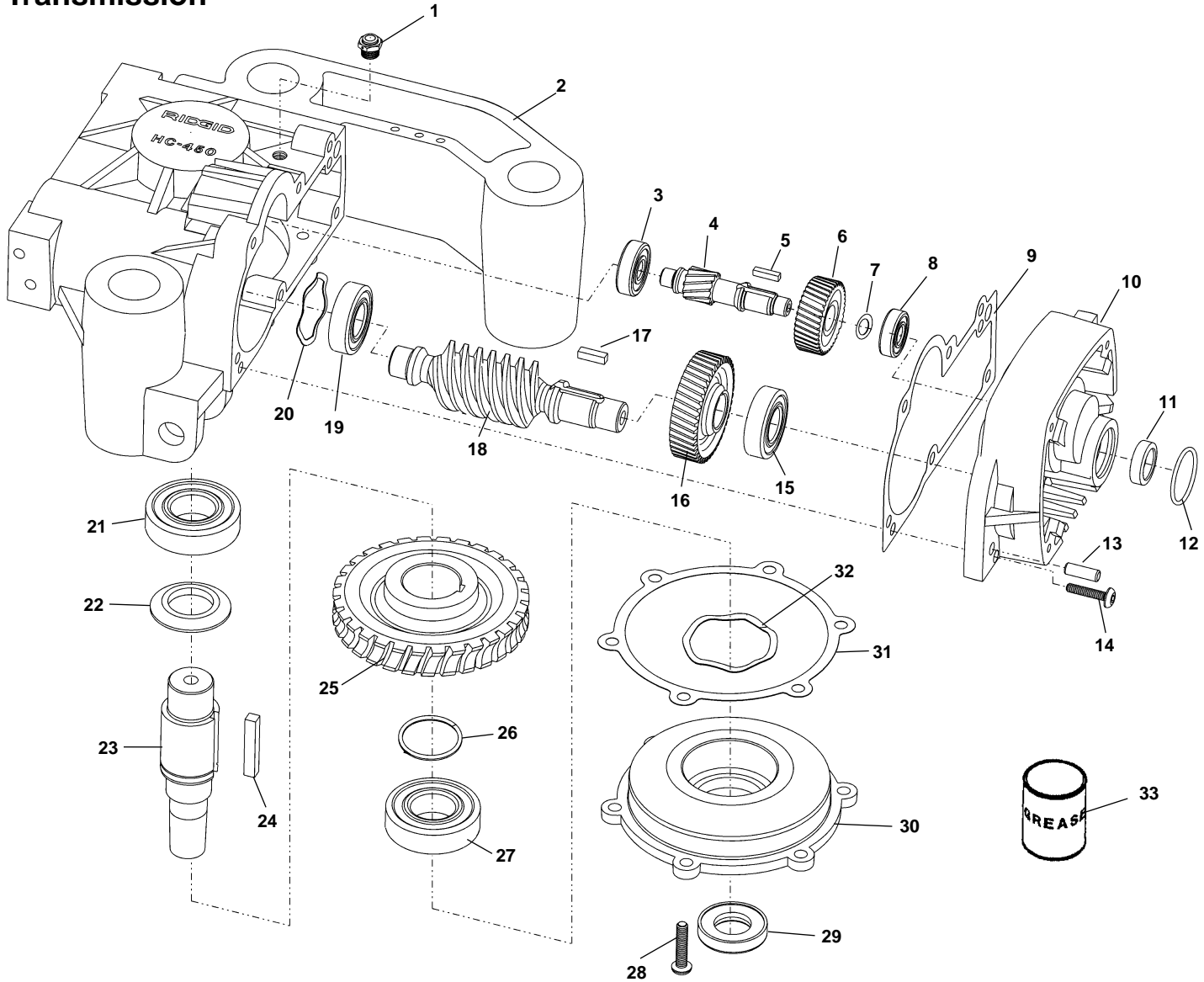
Main Components

**NOTE: Order parts by Catalog Number only.
DO NOT order by Reference Number.**

Ref. No.	Catalog No.	Description
1	59382	Gib Screw (2)
2	59337	Warning Label
3	45420	Screw, #10-24 x 3/8"
4	46985	Lock Washer #10
5	59407	Ground Spacer
6	59092	Pinion (2)
7	53072	Bearing (3)
8	36387	Split Roll Pin 3/16" x 1" (3)
9	34342	Roll Pin, 3/16" x 15/16" (4)
10	70797	Feed Shaft, 120V/230V
	70802	Feed Shaft, 100V
11	58957	Handwheel
12	59132	Chuck Key - Jacobs Style
	59057	Chuck Key - JIS Style
13	59102	Key Keeper
14	32115	Handle Assembly w/Nut
15	32120	Handle
16	32130	Swivel Nut
17	58987	Friction Ring
18	32110	Chain Screw
19	59187	Wear Pad with Screws (4)
20	40990	Roll
21	59192	Soc. Flat Hd. Screw, #10-24 x 1/2" (8)
22	32555	Wire Ring
23	59012	Chain Assembly
24	41035	Knurl Pin
25	59017	Wave Washer
26	59182	Retaining Ring
27	58997	Level Vial Assembly
28	58977	Base Assembly w/Posts
29	58992	Wear Plate
30	40260	Soc Head Cap Screw, #10-24 x 1/2"
31	59377	Flat Head Screw, 5/16" - 18 x 1"
32	59247	Chuck with Key - Jacobs Style
	59022	Chuck with Key - JIS Style
33	59027	Bearing (6)
34	59177	Compression Spring (3)



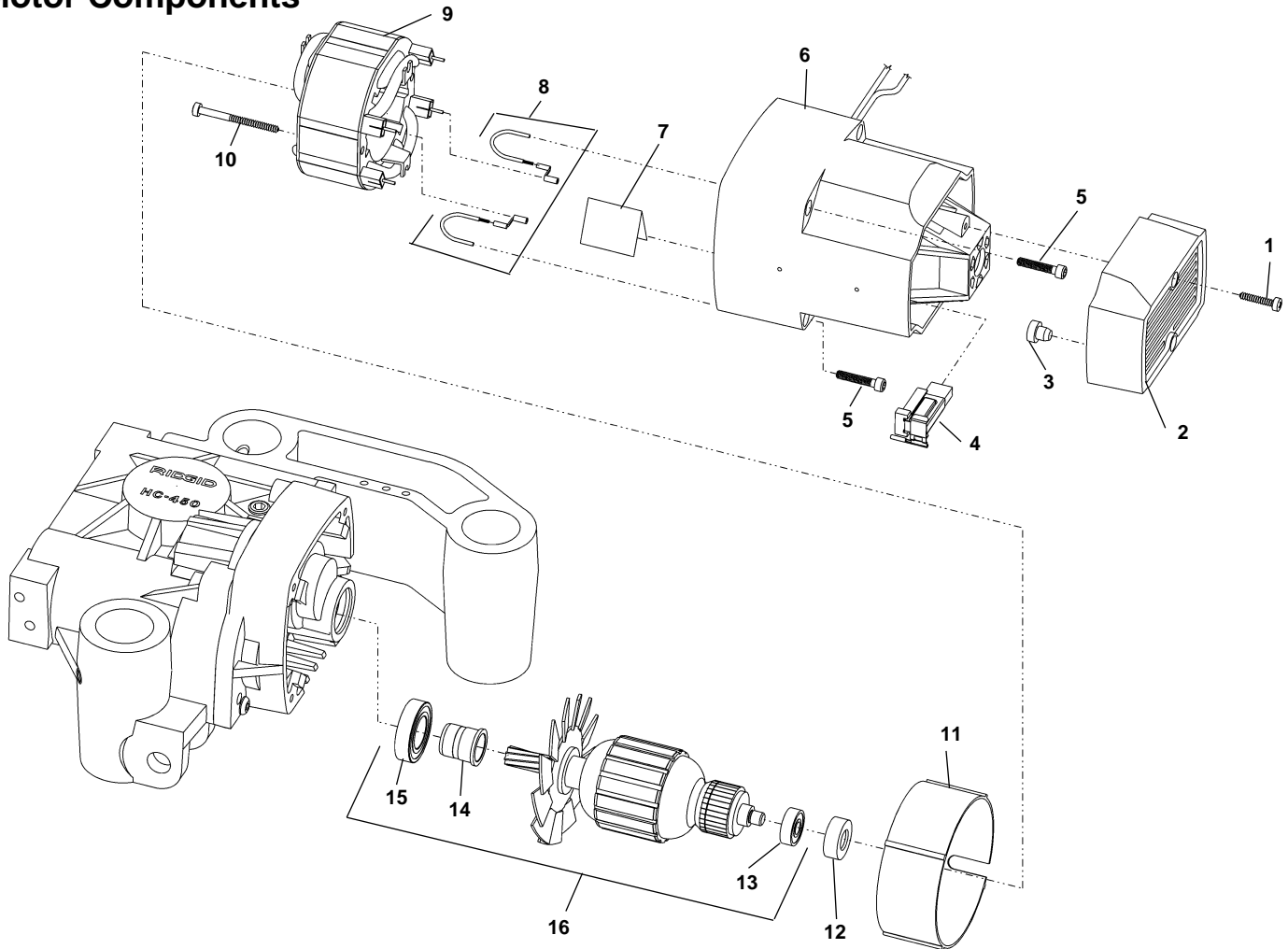
Transmission



**NOTE: Order parts by Catalog Number only.
DO NOT order by Reference Number.**

Ref. No.	Catalog No.	Description	Ref. No.	Catalog No.	Description
1	59252	Breather Plug	15	59137	Angular Contact Bearing
2	59062	Transmission Housing	16	59052	Helical Gear
3	44760	Ball Bearing	17	26657	Key, $\frac{3}{16}$ " Sq. x $\frac{5}{16}$ " Lg.
4	77222	Intermediate Gear Shaft, T2	18	59047	Worm Shaft
	59037	Intermediate Gear Shaft	19	44565	Ball Bearing
5	34472	Key	20	72267	Wave Washer
6	59042	Helical Gear	21	59152	Angular Contact Bearing
7	77237	Spacer, T2	22	59162	Spacer
8	72192	Ball Bearing, T2	23	59142	Output Spindle
	59147	Ball Bearing	24	26457	Key, $\frac{1}{4}$ " Sq. X $1\frac{3}{16}$ "
9	72192	Gasket, T2	25	59167	Worm Gear
	59077	Gasket	26	72217	Retaining Ring
10	77212	Motor Adapter, T2	27	45315	Ball Bearing
11	77207	Grease Seal, T2	29	59392	Oil Seal
12	77202	O-Ring, T2	30	72202	Cover
	60227	O-Ring	31	72207	Gasket
13	44640	Dowel Pin, $\frac{1}{4}$ " x $\frac{3}{4}$ " (2)	32	59082	Wave Washer
14	72212	Hex Button Hd Scr w/Sealant (12)	33	61332	Grease

Motor Components

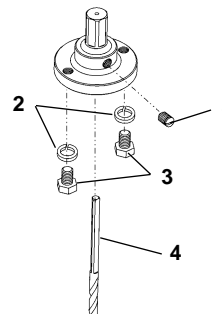


**NOTE: Order parts by Catalog Number only.
DO NOT order by Reference Number.**

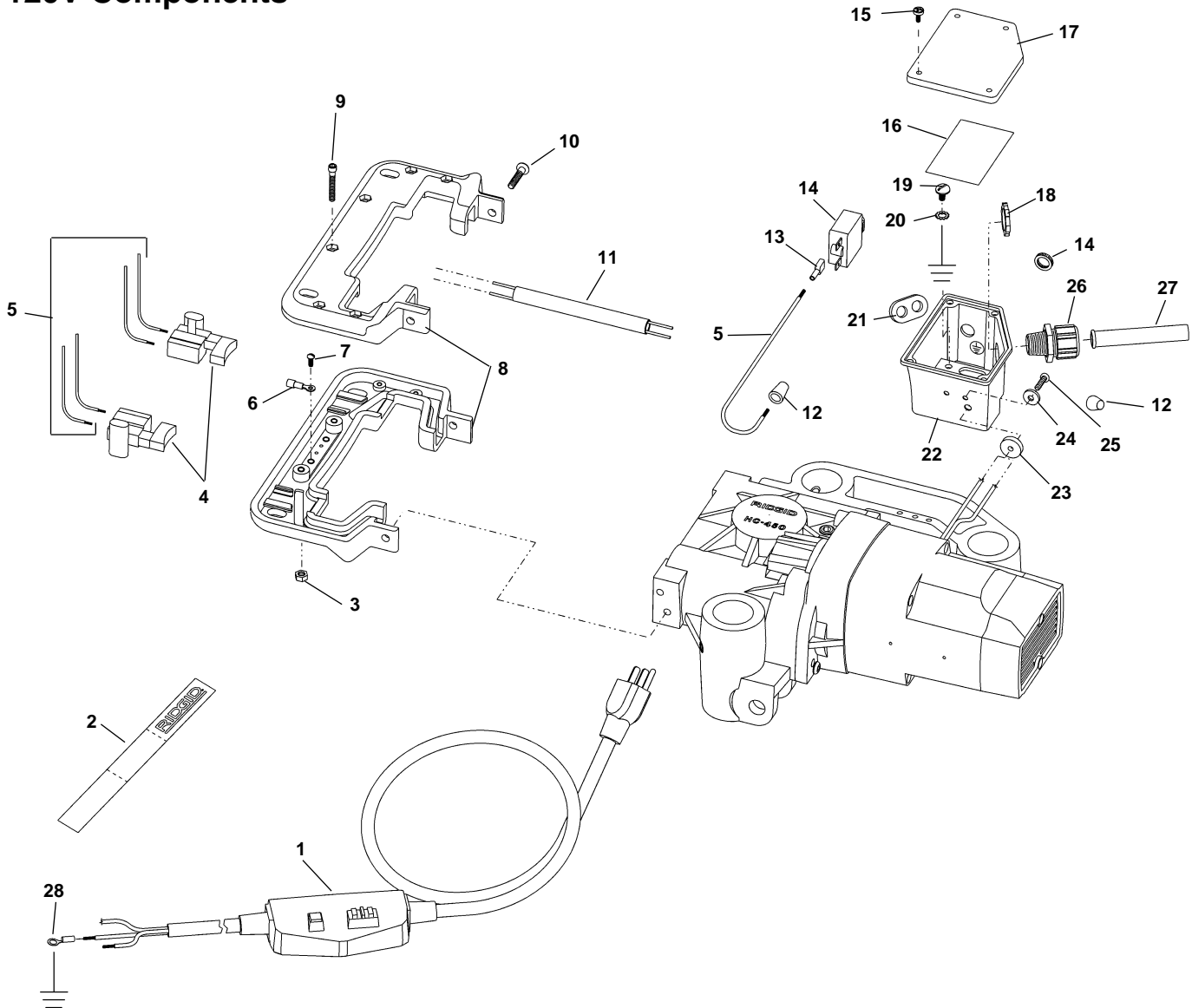
Ref. No.	Catalog No.	Description	Ref. No.	Catalog No.	Description
1	45867	Screw, Self Tapping (2)	11	58577	Fan Shroud
2	45872	End Cap	12	42777	Rubber Sleeve
3	45877	Bumper (2)	13	43017	Bearing
4	61287	Brush Assembly Set	14	77227	Armature Sleeve T2
5	93680	Screw, #10-24 x 1" Soc. Hd. Cap (4)	15	45912	Bearing
6	72157	Motor Housing		77232	Bearing T2
7	54367	Insulator	16	45907	Armature Assembly 120V
8	77027	Motor Lead Set		84087	Armature Assembly 120V T2
9	45897	Field 120V		58552	Armature Assembly 230V
	58567	Field 220V		84082	Armature Assembly 230V T2
	58572	Field 100V		58557	Armature Assembly 100V
10	45902	Field Screw (2)		84092	Armature Assembly 100V T2

R-4 Arbor Assembly

Ref. No.	Catalog No.	Description
—	59502	R-4 Arbor Assembly
1	59387	Set Screw, $\frac{5}{16}$ " - 24 x $\frac{1}{2}$ ", Cup Pt.
2	60080	Lock Washer, $\frac{5}{16}$ " (2)
3	60010	Hex Screw, $\frac{5}{16}$ " - 18 x $\frac{1}{2}$ " (2)
4	53085	Pilot Drill, $\frac{1}{4}$ "



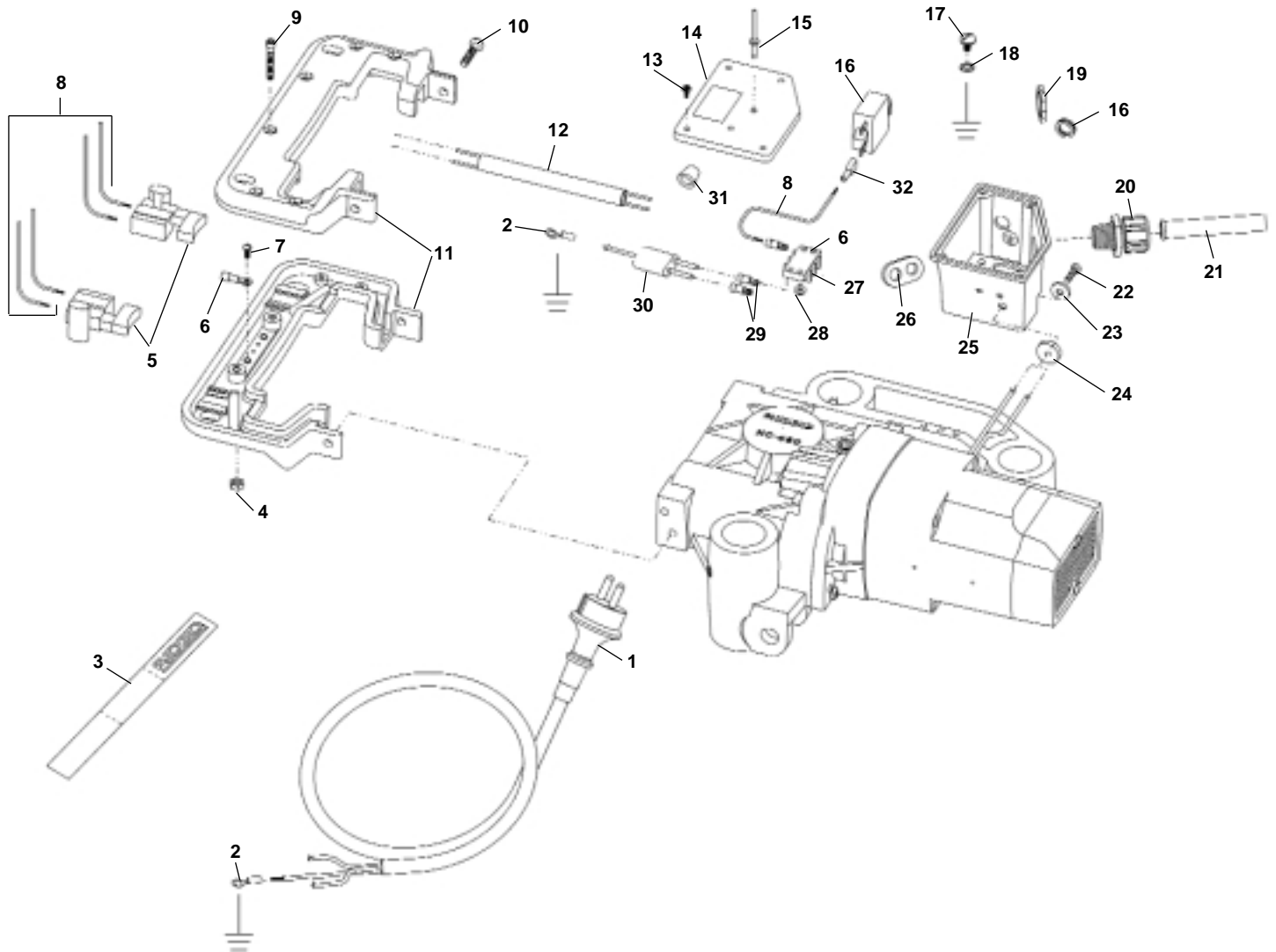
120V Components



**NOTE: Order parts by Catalog Number only.
DO NOT order by Reference Number.**

Ref. No.	Catalog No.	Description	Ref. No.	Catalog No.	Description	Ref. No.	Catalog No.	Description
1	50502	Power Cord w/GFCI	11	59342	Insulator Tube	20	46985	Lock Washer #10
2	59097	Cinch Strap	12	44635	Wire Nut (2)	21	59402	Seal
3	44695	Hex Nut, #10-24 (6)	13	59007	Terminal Set	22	59122	Junction Box
4	59317	Switch, 120V (2)	14	61302	Circuit Breaker, 15 Amp	23	59397	Gasket
5	59327	Wire Set	15	60575	Screw, #6-32 x 3/8" (4)	24	90812	Washer
6	83895	Ring Terminal #6 (2)	16	58982	Wiring Decal	25	93595	Screw, Self Tap (2)
7	46980	Screw, #6-32 x 5/16" (2)	17	72147	Cover Plate, 120V	26	65602	Strain Relief
8	59257	Handle Set	18	65642	Lock Nut 1/2" NPT	27	77002	Cord Guard
9	93680	Soc Hd Cap Screw, #10-24 x 1" (8)	19	59192	Screw, #10-24 x 1/2" FH Soc	28	26292	Ring Terminal
10	32205	Soc Hd Cap Screw, 1/4"-20 x 5/8" (4)						

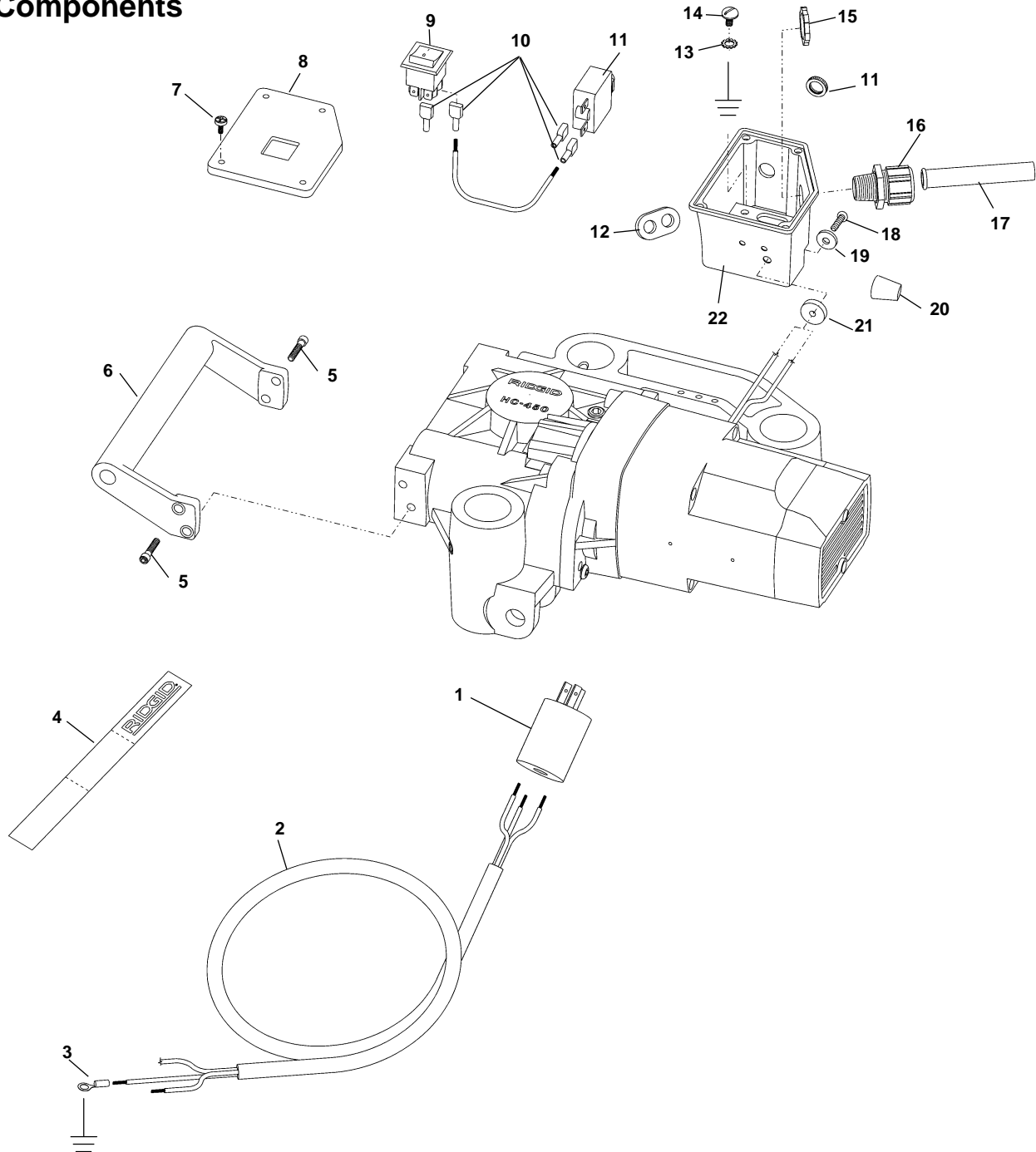
220V Components



**NOTE: Order parts by Catalog Number only.
DO NOT order by Reference Number.**

Ref. No.	Catalog No.	Description	Ref. No.	Catalog No.	Description	Ref. No.	Catalog No.	Description
1	39562	Power Cord w/Plug	12	59342	Insulator Tube	23	90812	Washer
2	26292	Ring Terminal	13	72167	Screw, #6-32 x 5/16" (4)	24	59397	Gasket
3	59097	Cinch Strap	14	59227	Cover Plate, 230V	25	59122	Junction Box
4	44695	Hex Nut #10-24 (6)	15	59112	Pop Rivet, 5/32" (4)	26	59402	Seal
5	59362	Switch, 230V (2)	16	59357	Circuit Breaker, 6 Amp	27	59367	Terminal Block
6	83895	Ring Terminal	17	59192	Screw, #10-24 x 1/2" FH Soc.	28	90817	Washer
7	46980	Screw, #6-32 x 5/16" (2)	18	46985	Washer	29	90807	Ring Terminal (2)
8	61307	Switch Wire Set	19	65642	Lock Nut 1/2" NPT	30	36502	Suppressor
9	93680	Soc. Hd. Cap Screw #10-24 x 1" (6)	20	65602	Strain Relief	31	44635	Wire Nut
10	32205	Soc. Hd. Cap Screw, 1/2" - 20 x 5/8" (4)	21	77002	Cord Guard	32	59007	Terminal Set
11	59257	Handle Set	22	93595	Screw Self Tap (2)			

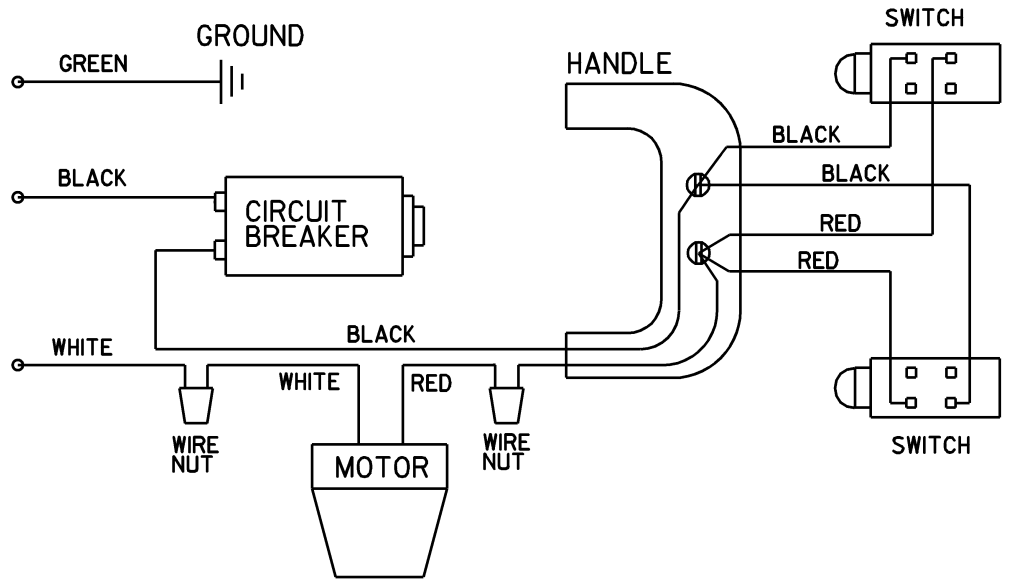
100V Components



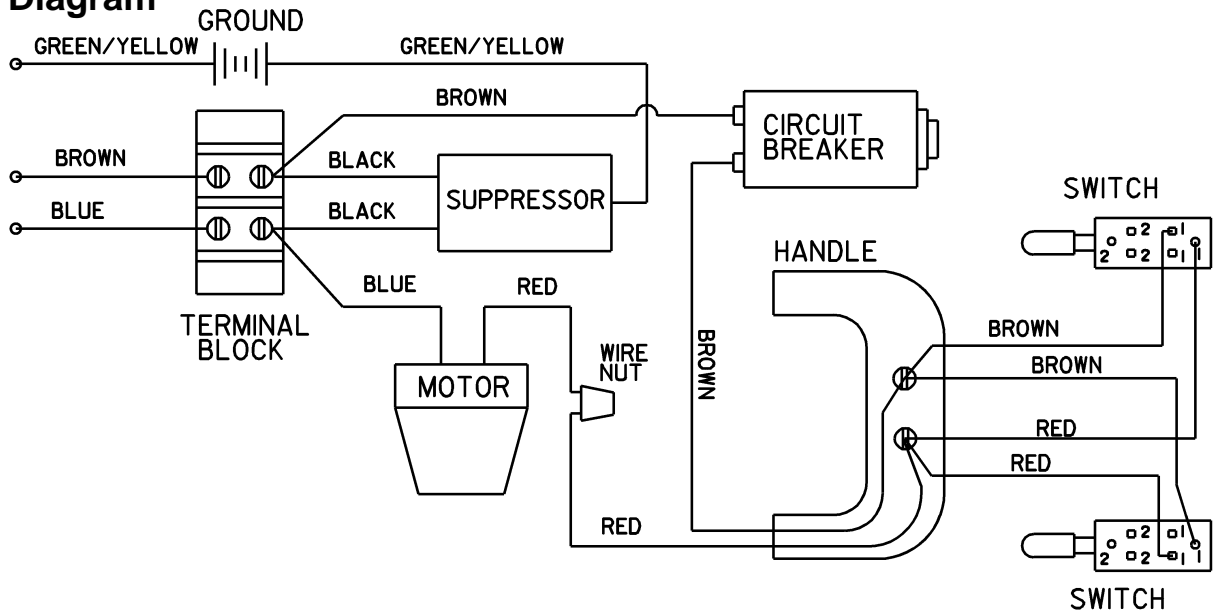
**NOTE: Order parts by Catalog Number only.
DO NOT order by Reference Number.**

Ref. No.	Catalog No.	Description	Ref. No.	Catalog No.	Description	Ref. No.	Catalog No.	Description
1	59332	Plug	9	59232	Rocker Switch	16	65602	Strain Relief
2	72172	Power Cord	10	59007	Terminal Set	17	77002	Cord Guard
3	26292	Ring Terminal	11	58962	Circuit Breaker, 15 Amp	18	93595	Screw, Self Tap (2)
4	59097	Cinch Strap	12	59402	Seal	19	90812	Washer
5	32205	Screw, 1/4" -20 x 5/8" S.H.C.S (4)	13	49685	Washer	20	44635	Wire Nut
6	59117	Handle	14	59192	Flat Head Screw #10-24 x 1/2"	21	59397	Gasket
7	72167	Screw #6-32 x 5/16" (4)	15	65642	Lock Nut 1/2" NPT	22	59122	Junction Box
8	59227	Cover Plate						

120V Wiring Diagram



230V Wiring Diagram



100V Wiring Diagram

