

No. 10

Capacity: 1/8" through 1" O.D.

No. 15

Capacity: 3/16" through 1 1/8" O.D.

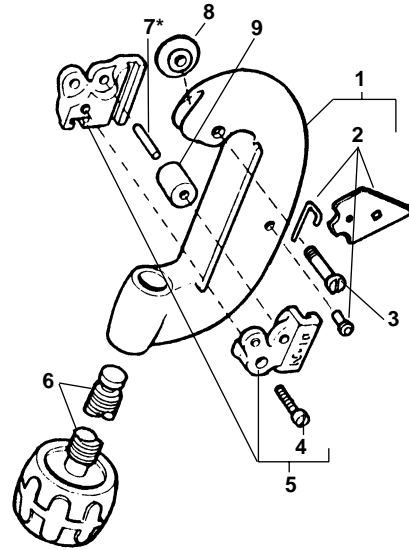
No. 20

Capacity: 5/8" through 2 1/8" O.D.

**NOTE: Order parts by Catalog Number only.
DO NOT order by Reference Number.**

	10 1/8"-1"	15 3/16"-1 1/8"	20 5/8"-2 1/8"
Ref. No.	Catalog No.	Catalog No.	Catalog No.
1	34605	34600	33575
2	34330	34335	34340
3	34325	34325	34345
4	34300	34615	34620
5	33760	34610	33580
6	34590	34585	34595
7	34860	*	*
8	33160	33160	33160
	33165	33165	33165
9	34830	34805	34825

*Three Roll Housing Screws (Ref. No. 4) used in place of Roll Pins.



No. 30

Capacity: 1" through 3" O.D.

Ref. No.	Catalog No.	Description
1	33375	Frame Assembly
2	34360	Wheel Screw
3	34420	Stop Screw
4	33932	Roll Pin
5	34365	Screw Handle
6	33520	Roll Housing
7	34370	Roll
8	33170	Cutter Wheel (Thin)
	33175	Cutter Wheel (Heavy-Duty)

