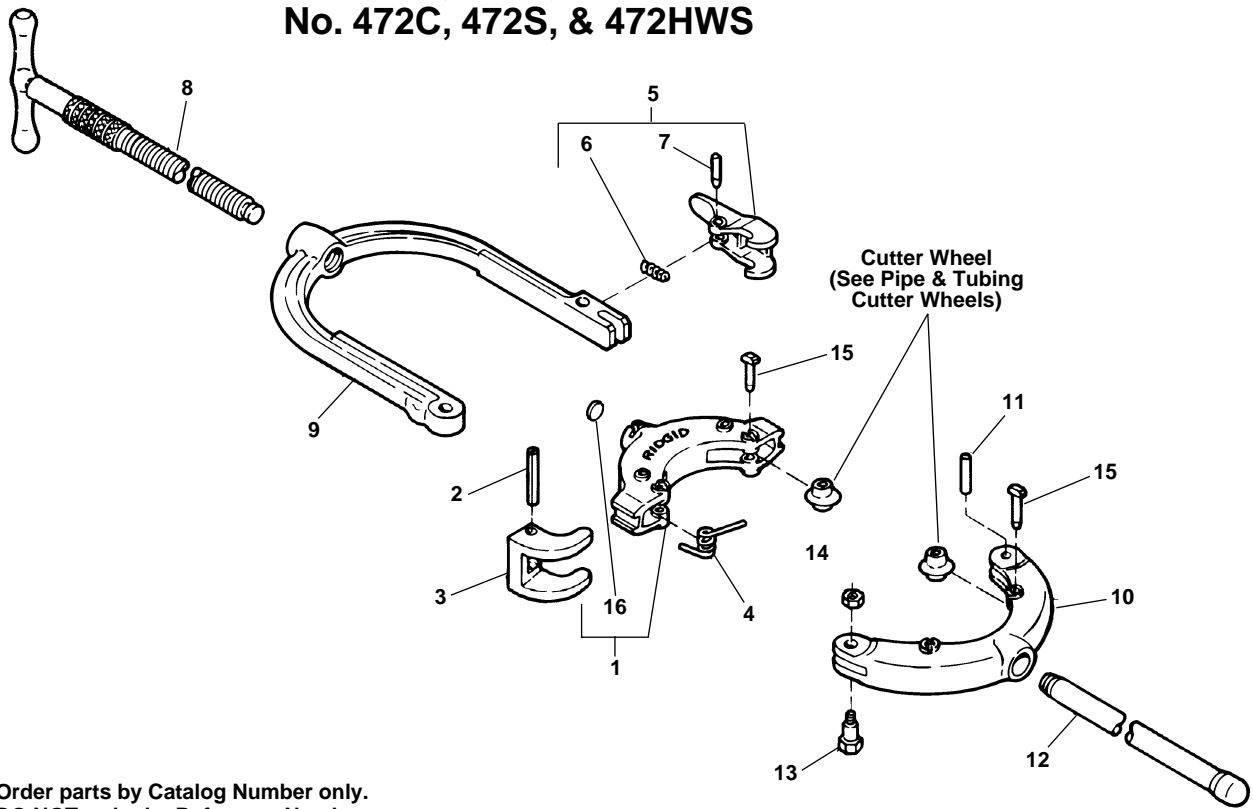


**Hinged Pipe Cutter: No. 424C/DI, 424S  
 No. 466C, 466S, 466HWS  
 No. 468C, 468S, 468HWS  
 No. 472C, 472S, & 472HWS**

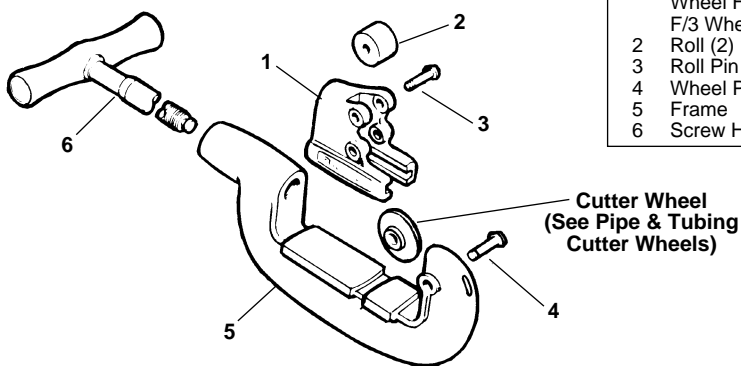


NOTE: Order parts by Catalog Number only.  
 DO NOT order by Reference Number.

	424 2"-4"	466 4"-6"	468 6"-8"	472 8"-12"
Ref. No.	Catalog No.	Catalog No.	Catalog No.	Catalog No.
1	75837	74690	74705	74715
2	83110	83110	83110	83110
3	75852	83105	83105	83105
4	75857	83115	83115	83115
5	75887	74695	74695	74695
6	83130	83130	83130	83130
7	75867	50307	50307	50307
8	75847	83100	83100	83100

	424 2"-4"	466 4"-6"	468 6"-8"	472 8"-12"
Ref. No.	Catalog No.	Catalog No.	Catalog No.	Catalog No.
9	75827	83090	83155	83175
10	75832	83095	83160	83180
11	83125	34375	34375	34375
12	—	38585	38585	38585
13	83120	83120	83120	83120
14	79985	79985	79985	79985
15	75862	34790	34790	34790
16	75872	83135	83135	83135

**No. 1-A  
 No. 2-A  
 No. 202  
 No. 2000A**



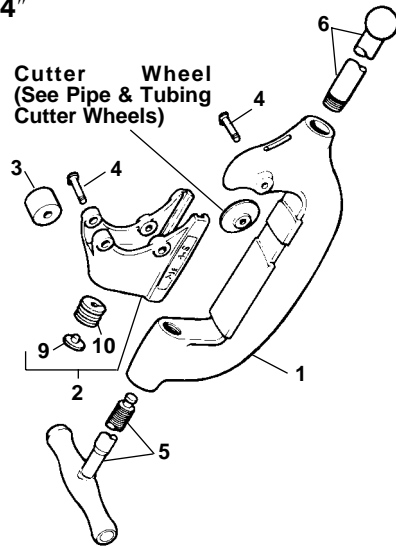
	1-A 1/8"-1 1/4"	2-A 1/8"-2"	202 1/8"-2"	2000A 1/8"-2"
Ref. No.	Catalog No.	Catalog No.	Catalog No.	Catalog No.
1	33765	33765	33400	39527
2	34775	34775	34305	34775
3	34780	34780	34310	39537
4	34780	34780	34780	34780
5	33310	33305	33350	39522
6	33510	33505	33505	39532

**No. 3-S**

Capacity: 2", through 3"

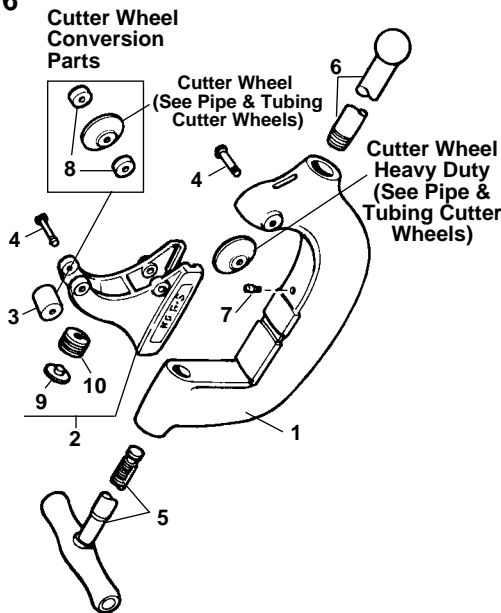
**No. 4-S**

Capacity: 2", through 4"



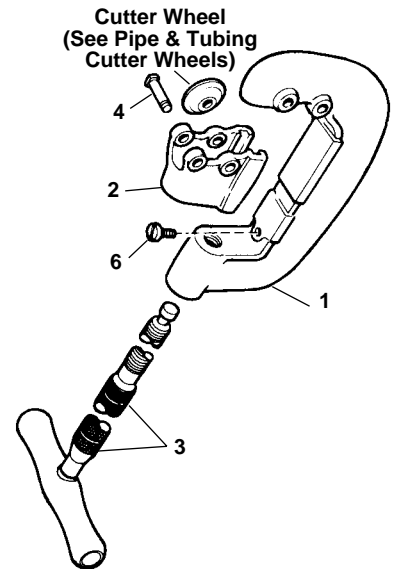
**No. 6-S**

Capacity: 4" through 6"



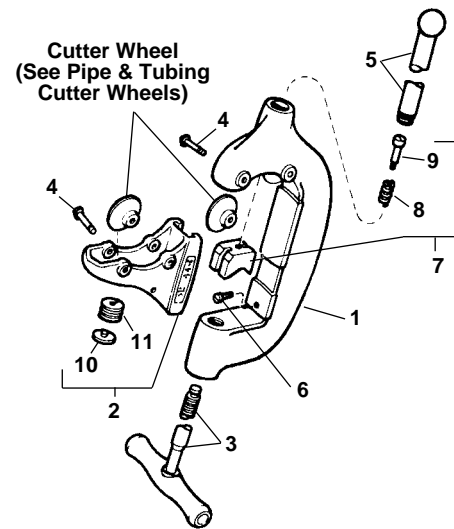
**No. 42-A**

Capacity: 1/2" through 2" O.D.



**No. 44-S**

Capacity: 2 1/2" through 4" O.D.



NOTE: Order parts by Catalog Number only.  
DO NOT order by Reference Number.

Ref. No.	Description	3-S 1"-3"	4-S 2"-4"	6-S 4"-6"
1	Frame	33285	33280	33275
2	Roll Housing	33390	33385	33300
3	Roll (2)	34785	34785	34785
4	Pin (3)	34790	34790	34790
5	Screw Handle	33515	33515	33515
6	Pipe Handle	35030	35030	35030
7	Stop Screw			34425
8	Wheel Spacer (2)			34855
9	Wear Plug	34320	34320	34320
10	Wear Plug Spring	34315	34315	34315

Ref. No.	Description	42-A 1/2"-2"	44-S 2 1/2"-4"
1	Frame	33295	33270
2	Cutter Wheel Housing	33455	33345
3	Screw Handle	33590	33515
4	Wheel Pin (4)	34780	34790
5	Pipe Handle		35030
6	Stop Screw	34425	34425
7	Guide Block Assembly		34840
8	Spring		34850
9	Shoulder Screw		34845
10	Wear Plug		34320
11	Wear Plug Spring		34315